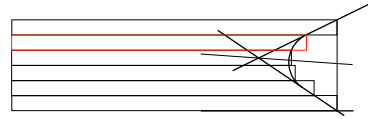
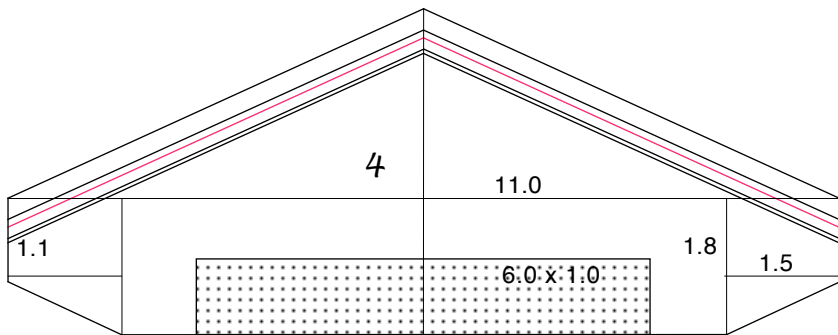
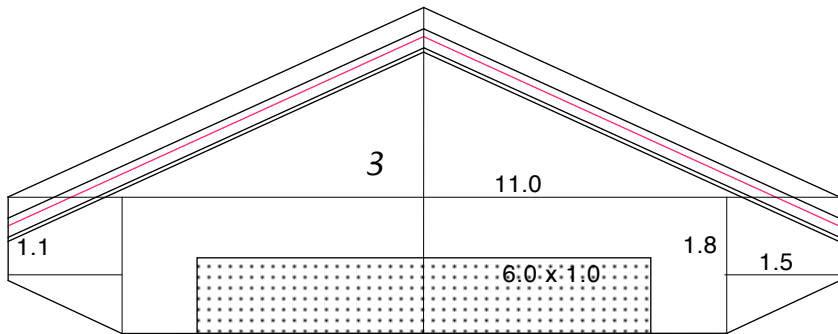
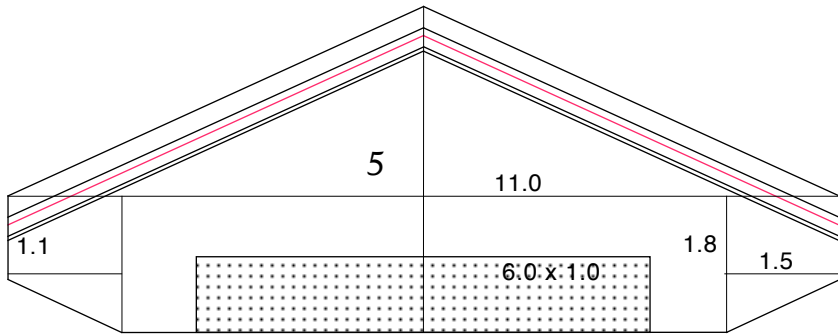
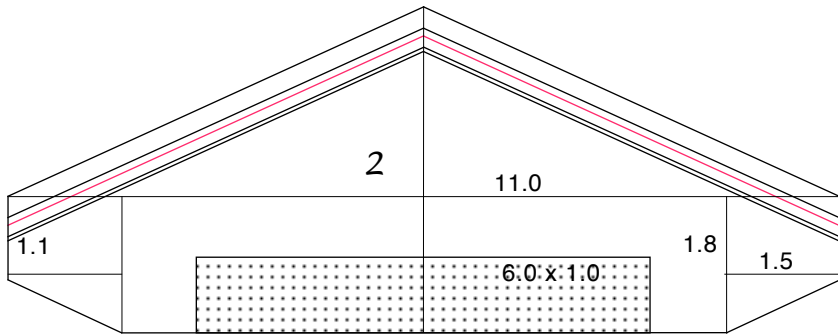
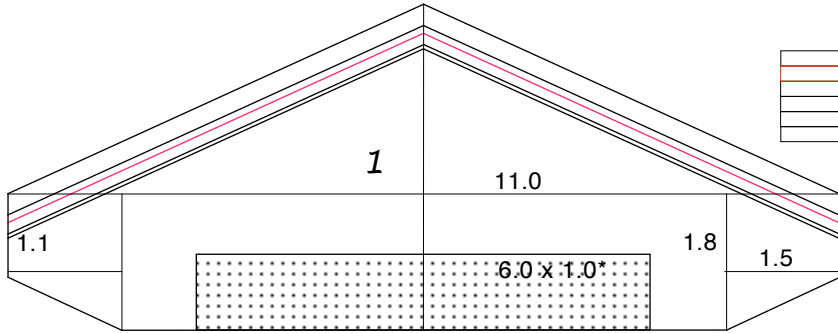
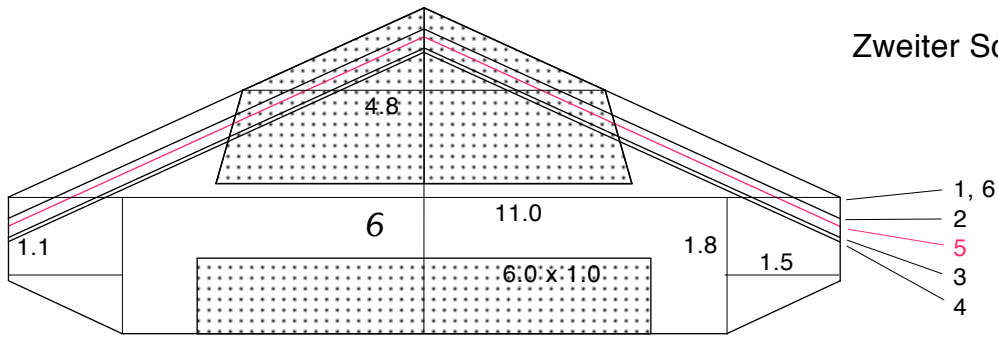


Zweiter Schienenräumer Allegra

5.8.2013



- 4.30 --- 6
- 3.90 --- 5
- 3.70 --- 4
- 3.75 --- 3
- 4.00 --- 2
- 4.30 --- 1

*) Mit einer 3 mm-Trägerplatte direkt am Getriebekasten anschraubbar. Mit einer 2 mm-Platte Ausschnitt 9 mm tief.

Schablonen 1 - 6 auf Kunststoffplatte durchstechen, aussägen und der Reihe nach zusammenkleben.